

Venduct® Solar Cable Outlet Kit & Sealing Collar

No more problems with cables which pass through the roof



Klober's Solar Cable Outlet Kit creates a watertight seal around cables which pass through the roof. Use in conjunction with Klober's Sealing Collar to create a wind- and airtight seal around the penetration.

Product features & benefits

- Provides watertight lead-through for cables which pass through the roof
- 8 Cable Insert allows additional cables to be added
- Foam strip and sealing bar provide perfect barrier against driving rain
- Fully wind-tunnel tested
- Available in 3 colours to match the roof
- Slate Cable Kit also available
- Sealing Collar creates airtight seal around cables passing through the roof

Area of application

Suitable for:

- Various types of cables eg PV-systems, sensor cables, antenna cables, lights, security cameras
- Cables with a diameter 4mm – 8mm
- Roof pitches between 20° – 50°
- Most popular concrete interlocking & plain roof tiles
- Slates
- Sealing Collar: suitable diameters 8-12mm, 15-22mm, 25-32mm, 42-55mm & 50-70mm

Material

UV resistant soft & rigid PVC

Sealing bar: polypropylene

Sealing Collar: with silicon release paper & EPDM Collar

Weight (per Kit)

Cable Kit 1.2kg / Slate Kit 12.5kg

Product codes

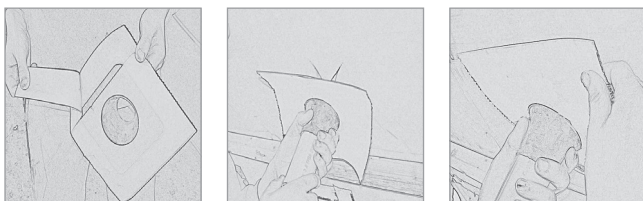
Tile Cable Kit	KE8073	Sealing Collar 8-12mm	KE8092
Slate Cable Kit	KE8075	Sealing Collar 15-22mm	KE8093
Cable Insert	KE8082	Sealing Collar 25-32mm	KE8094
		Sealing Collar 42-55mm	KE8090
		Sealing Collar 50-70mm	KE8091



Installation Cable Kit

Full instructions are provided with each carton.

Sealing Collar



1. Peel off the protective backing paper section shown in diagram 1
2. Place the collar over the pipe
3. Press and stick on to the material
4. Peel back the second section of the backing paper and apply
5. To ensure good adhesion, press firmly all around

TECHNICAL DATA

Dimensions (mm)

Tile Cable Kit: 248 L x 150 W x 73 D
Slate Cable Kit: 600 L x 290 W x 420 D
Universal Base Tile: 425 x 450 (incl. skirt)
Sealing Collar: 228 x 228 x 60

Colours

Brown (0247), Red (0100), Slate grey (0429), Slate version Black (0450)

Packaging

Tile Cable Kit 1 per carton, 20 per pallet
Slate Cable Kit 10 per carton, 80 per pallet
Sealing Collars 2 per carton, 126 per pallet

TS-SL#02-UK-0114. We assume no liability for typing errors.

Klober Ltd

Unit 6F · East Midlands Distribution Centre · Short Lane · Castle Donington · Derbyshire · DE74 2HA
Tel. +44 (0)1332 813 050 · Fax +44 (0)1332 814 033 · info@klober.co.uk · www.klober.co.uk

KLOBER