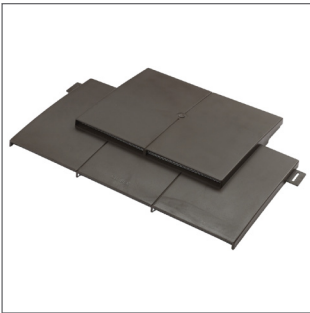


Clay Plain Tile Vent



Installation

The Clay Plain Tile Vent is positioned on the battens above the course below in broken bond format. An inverted T is cut into the underlay to provide a ventilation opening. If the mechanical adaptor is being used the underlay opening must be large enough to accommodate the spigot. Once the opening has been made the Tile Vent is placed over the opening and fixed into the batten through the two fixing points on each side of the vent.

Clay Plain Tile Vent is a discreet ventilating tile suitable for clay and concrete plain tiles that provides 9,000mm² effective ventilation area.

Product features & benefits

- In-line design makes the vent virtually invisible in the roof line
- Can also be used with concrete plain tiles
- Adaptor and Flexipipe available for soil/mechanical extraction

Area of application

Suitable for:

- Most clay and concrete plain tiles on roof pitches 30° and above
- High or low level roof space ventilation

Material

UPVC

Colours / Product Codes

Brown	KG4321-0200
Terracotta	KG4321-0100

Dimensions / Weight (per carton)

The size of 5 plain tiles / 8.7kg

Packaging

10 pcs per carton

Related products

Flexipipe 100/100mm	KG979900
Soil/Mechanical Adaptor	KG8003

Regulations and certifications

Complies fully with relevant Building Regulations and British Standards.

PERFORMANCE / TECHNICAL DATA

Provides 9,000 mm² effective ventilation area

Vent spacing

5mm opening at 1.8m centres

10mm opening at 0.9m centres

25mm opening at 0.36m centres

TS-00#12-UK-0214. We assume no liability for typing errors.

Klober Ltd

Unit 6F · East Midlands Distribution Centre · Short Lane · Castle Donington · Derbyshire · DE74 2HA
Tel. +44 (0)1332 813 050 · Fax +44 (0)1332 814 033 · info@klober.co.uk · www.klober.co.uk

KLOBER