

# Venduct® Solar Thermal Outlet Kit & Sealing Collar

The ideal universal connection solution for solar thermal systems

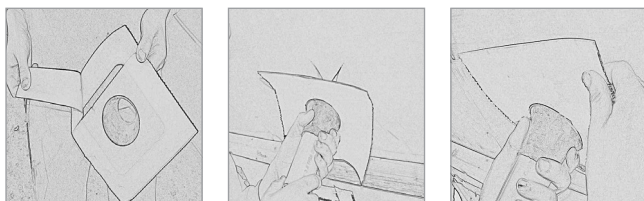


## Installation Solar Outlet

Full instructions are provided with each carton. NB When using with Thermo Solar panels, **the insulation must not be removed**. This will avoid the hot pipe coming in to direct contact with the collar

and the heat sensor cable coming into contact with the pipe.

## Sealing Collar



1. Peel off the protective backing paper section shown in diagram 1
2. Place the collar over the pipe
3. Press and stick on to the material
4. Peel back the second section of the backing paper and apply
5. To ensure good adhesion, press firmly all around

The Solar Outlet allows cables and water pipes for solar panels to pass through the roof without compromising the watertightness of roof coverings. The Sealing Collar creates an airtight seal around pipes which pass through the roof via the Solar Outlet.

## Product features & benefits

- Watertight seal can be formed by cutting the nozzle to the appropriate size
- Easy to install
- Available in two colours to match the roof
- Universal Tile Base suits most concrete interlocking tiles
- Slate Base also available
- Minimum roof pitch Uni Base Tile 17.5°, Slate Base 20°
- Sealing Collar creates airtight seal around pipes passing through the roof
- Kit contains base tile, adaptor & nozzle

## Area of application

Nozzle can accommodate pipe/cables with diameters between 10mm and 70mm.

Sealing Collar: suitable for pipes with diameters 8-12mm, 15-22mm, 25-32mm, 42-55mm & 50-70mm.

## Material

UV resistant PVC

Nozzle: EPDM

Sealing Collar: with silicon release paper & EPDM Collar

## Weight (per Kit)

Universal base Kit	2.20kg
Slate base Kit	1.95kg
Sealing Collar 42-55mm	0.14kg
Sealing Collar 50-70mm	0.16kg

## Product codes

Universal base Kit	KE8070
Slate base Kit	KE8071
Sealing Collar 8-12mm	KE8092
Sealing Collar 15-22mm	KE8093
Sealing Collar 25-32mm	KE8094
Sealing Collar 42-55mm	KE8090
Sealing Collar 50-70mm	KE8091

## TECHNICAL DATA

### Dimensions

Nozzle & Collar: 120mm high x 350mm long x 120mm wide  
Universal Base Tile: 425 x 450mm (including skirt)  
Slate Base: 400 x 400mm  
Sealing Collar: 228 x 228 x 60mm

### Colours

KE 8070 / KE 8067: Red (0100), Slate Grey (0429)  
KE 8071: black (0450)

### Packaging

Kit: 1 pc/carton 18 pcs/pallet  
Sealing Collars: 2 pcs/carton 126 pcs/pallet

TS-SL#02-UK-0114. We assume no liability for typing errors.

### Klober Ltd

Unit 6F · East Midlands Distribution Centre · Short Lane · Castle Donington · Derbyshire · DE74 2HA  
Tel. +44 (0)1332 813 050 · Fax +44 (0)1332 814 033 · info@klober.co.uk · www.klober.co.uk

# KLOBER