

## Permo Frame is Klover's breathable membrane for use on vertical walls.\*

The vapour permeable membrane helps to reduce the risk of condensation forming whilst protecting the timber and insulation both during construction and on completion.



### Features & benefits

- Breathable wall membrane ideal for timber frame construction.
- 1.5m and 2.7m widths.
- UV stable for 4 months.
- Protects the ply or OSB sheathing and the timber frame from external moisture ingress, yet allows the wall structure to breathe.

### Area of application

Suitable for use on:

- Timber and steel framed walls.\*
- Factory pre-assembled panels.
- On-site assembled frames.



### Technical guidance

**Material:** Nonwoven spun-bonded polypropylene.

Colour	Anthracite
Weight g/m <sup>2</sup> EN 1849-2	100
Resistance to water penetration EN 1928	W2
Tensile strength MD/CD (N/50mm) EN 12311-2	255/200
Nail tear strength MD/CD (N) EN 12310-2	130/130
Elongation MD/CD (%) EN 12311-2	50/50
Reaction to fire EN 13501-1	E
Resistance to temperature	-40°C

### Product information

Product code	Width m	Length m	m <sup>2</sup>	Weight per roll kg	Pallet quantity
KU0059-3-1-15-10	1.5	50	75	7.5	42
KU0059-3-1-27-10	2.7	100	270	27	20

\*NOTE: Consideration must be given to the intended use and height of the building based on the reaction to fire performance declared.

For further information please consult the relevant guidance document such as Approved Document B for England.

## Installation guidance

**Permo frame should be laid in accordance with our installation details.**

Permo frame provides a barrier to moisture and must be installed to channel water to the outside. The upper layers must overlap the lower layers and also lap any cavity trays. Unroll Permo frame horizontally and fix to the outside of the frame. Ensure the membrane covers the lowest frame member by a minimum of 25mm.

At external corners return the membrane at least 300mm. Form 100mm horizontal laps and 300mm vertical laps. Stagger vertical laps by a minimum of 300mm.

Optionally, tape and seal laps with either Permo TR plus or Tacto adhesive tape.

All tears and rips within the Permo frame must be repaired using Permo TR plus tape. Nail or staple Permo frame, using non corrosive fixings, to every stud at maximum 300mm centres.

At window openings turn the Permo Frame into the opening, fix to the reveals and trim. Tape to create an air & windtight seal.



### Typical timber frame wall construction

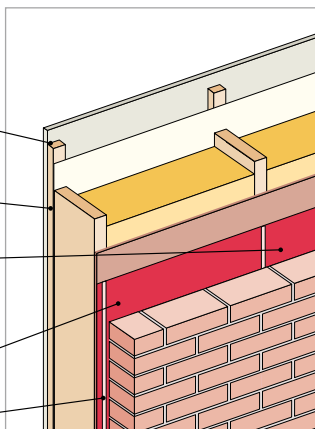
Timber battens to form a services void and avoid service penetrations through the vapour control layer

Wallint 50 air barrier/vapour control layer

Water resistant Permo frame repels any wind-driven water that penetrates the outer cladding

Water vapour passes through Permo frame to the vented cavity

Moisture is dispersed from the vented cavity



### Typical details

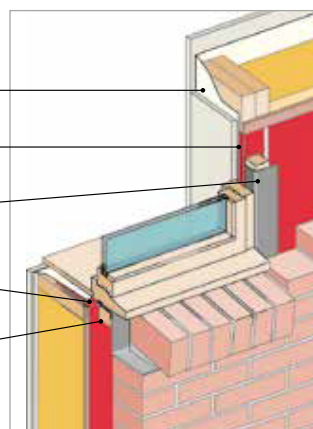
Turn Wallint 50 or solar air barrier/vapour control layer into reveals

Permo frame turned into openings

Cavity closer with flashing

Permo frame turned into openings and lapped by Wallint 50 or solar air barrier/vapour control layer

Cavity closer with flashing



### Typical timber ground floor construction

Insulation between floor joists

Permo frame stapled to side of joist to depth of insulation

Permo frame supports insulation between joists

Moisture is dispersed from the vented sub floor space

